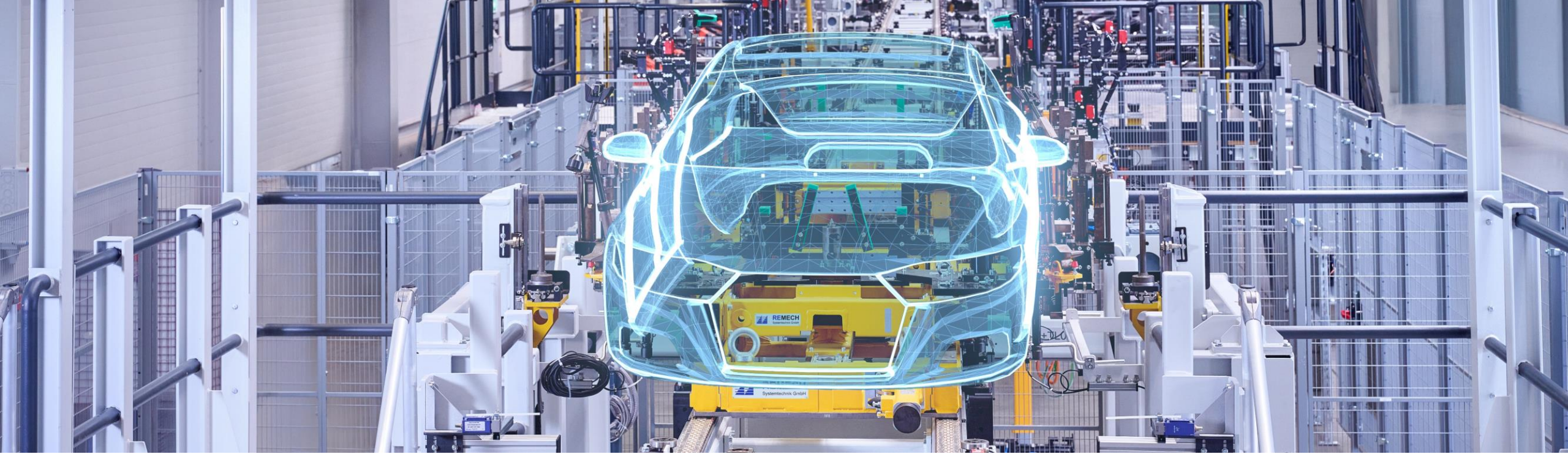




**REMECH**  
Systemtechnik GmbH



# We automate your production

Company Presentation



# The Company

# Our Strengths

## Competence through focus

Mechatronic system solutions for body shop finish operations and final assembly in the automotive sector.



## Everything from one source

From the first concept to ongoing operation.

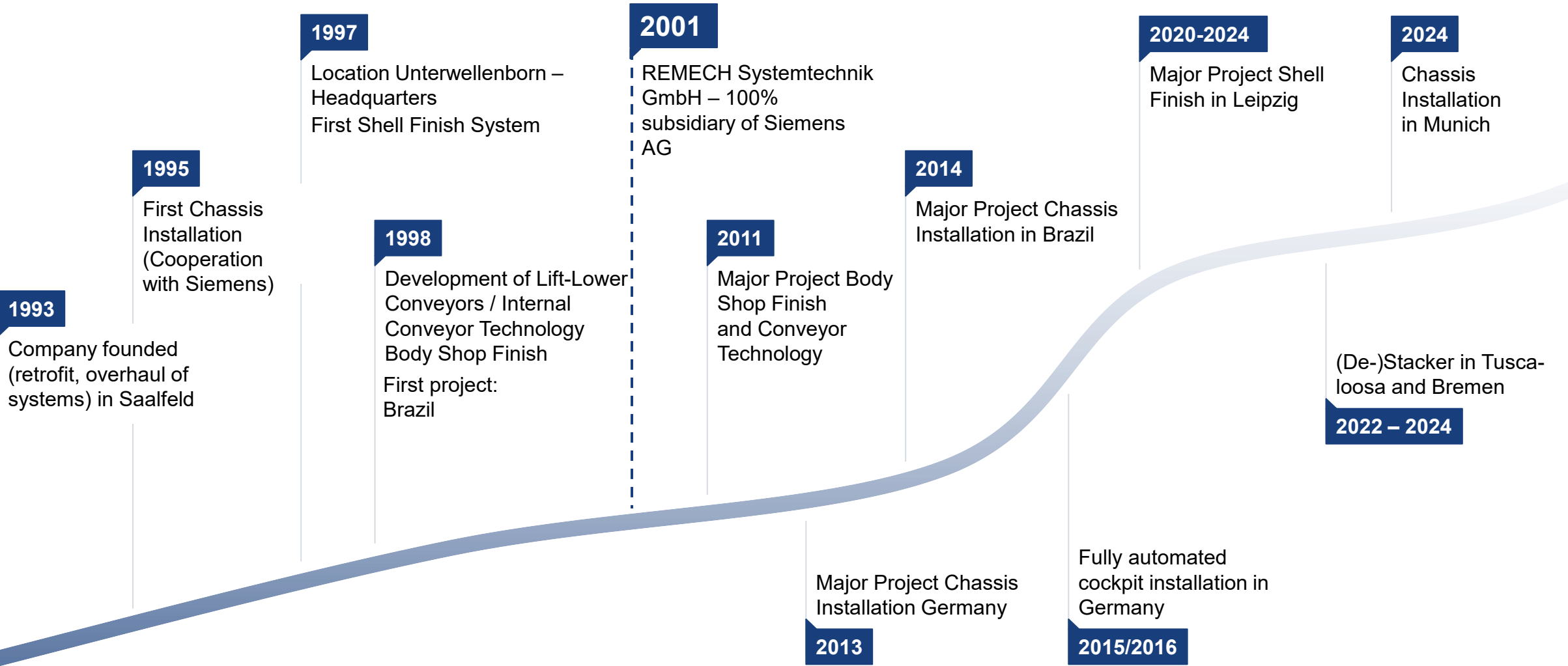


## A strong Team

We live customer proximity and customer orientation.



# Overview



# References

## Worldwide at renowned automotive manufacturers (2 / 2)



# Locations / Sales Regions

## REMECH site



### Germany

Headquater Unterwellenborn



### Sales regions\*

#### Germany

DE Nord, Braunschweig  
DE Süd 1, Stuttgart  
DE Süd 2, Munich

#### Czech Republic

Prag

#### Austria

Linz

#### Schweden

Göteborg

#### Slovakia

Bratislava

#### Spain

Madrid

#### Hungary

Budapest

#### China

Shanghai

#### USA

Greer, South Carolina

#### Brazil

Sao Paolo

#### Mexico

Puebla

\* In cooperation with Siemens



# Portfolio



## Body Shop Finish

**Complete systems**  
**Assembly systems for add-on components**  
**Inline quality measurement system**

[▶ Video](#)



## Conveyor Technology

**Lift-and-lower conveyor**  
**Floor conveyor technology**  
**Special-purpose conveyors**

[▶ Video](#)



## Final Assembly

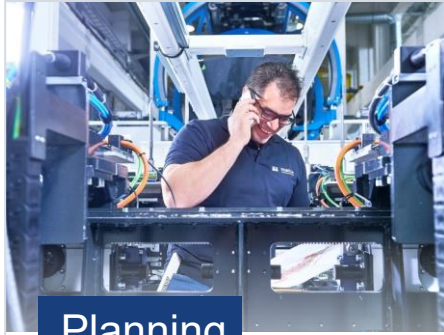
**Complete systems**

- Chassis installation
- Battery installation for electric vehicles
- Cockpit installation
- Pre-assembly systems

[▶ Video](#)

# Organizational Structure

All services for our solutions — completely from a single source



## Planning

- New-plant planning
- Planning from vehicle integration
- Feasibility analyses
- Creation of specifications



## Design

- 3D Design (CATIA V5, NX)
- 3D layout creation (Microstation, HLS)
- Process planning (Process Designer, Process Simulate, MTM)



## Projektmanagement

- Projektmanagement
- Technical project planning
- Schedule planning
- Project controlling
- Cost controlling



## Manufacturing

- Fabrication of welded parts
- CNC machining



## Assembly & Commissioning

- Assembly of modules
- Site management
- On-site assembly

# Qualifications

Quality is our top priority

## Quality



Qualification from TÜV Hessen  
**DIN EN ISO 9001:2015**

- Current certification obtained on: 26.01.2025
- No nonconformities

## Envoirement



Qualification from TÜV Hessen  
**DIN EN ISO 14001: 2015**

- Current certification obtained on: 05.09.2022
- No nonconformities

## Occupational safety



Qualification from TÜV Hessen  
**DIN ISO 45001:2018**

- Current certification obtained on: 16.08.2022
- No nonconformities

# Our Team

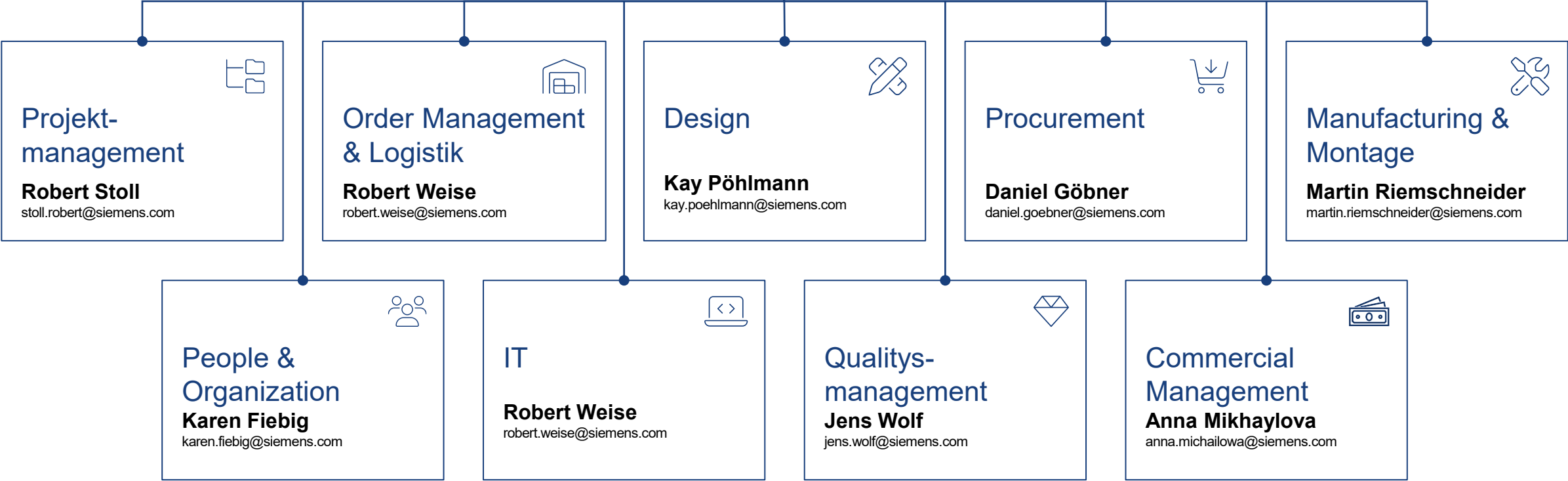
## Management



**Jens Wolf**  
jens.wolf@siemens.com



**Anna Mikhaylova**  
anna.michailowa@siemens.com



## Body Shop Finish

### The all-round carefree package: Fixtures for body construction

Safety, reliability, quality  
and type flexibility

Hand-guided and semi- / fully automated geometry installation fixtures (GEO) from REMECH ensure cycle-time-optimized efficiency and ergonomics during the installation of add-on parts.

Our engineering expertise ensures that cycle-time requirements for installing add-on parts such as fenders, front and tailgates are met as precisely as the requirements for gaps and flushness.

You set the requirements, we realize your project.

[▶ Video](#)



# Conveyor Technology

## Interne Conveyor Technology for body construction

Speed, efficiency,

positioning accuracy and flexibility

Lift-lower conveyors of the latest generation from REMECH enable extremely short cycle change times and high energy efficiency when transporting bodies.

With conveyor elements such as geometry installation fixtures (GEO) overhead or GEOTACK heavy-duty conveyors, we provide additional individual solutions for transporting components and components and fixtures in body construction.

**You set the requirements, we realize your project.**

[▶ Video](#)



# Conveyor Technology

## Interne Conveyor Technology for body construction

Cycle time reduction, scalability,  
positioning accuracy, energy efficiency

Wherever GEO workpiece carriers are used — the High-Speed Belt Conveyor (HBC) is the right solution for extremely short cycle change times and direct positioning with absolute precision.

The form-fit and belt-driven conveyor technology is, due to its scalability, the ideal solution for applications in all load ranges der automobilen Manufacturing.

**You set the requirements, we realize your project.**

[▶ Video](#)



# Final Assembly / chassis installation and Upgrading

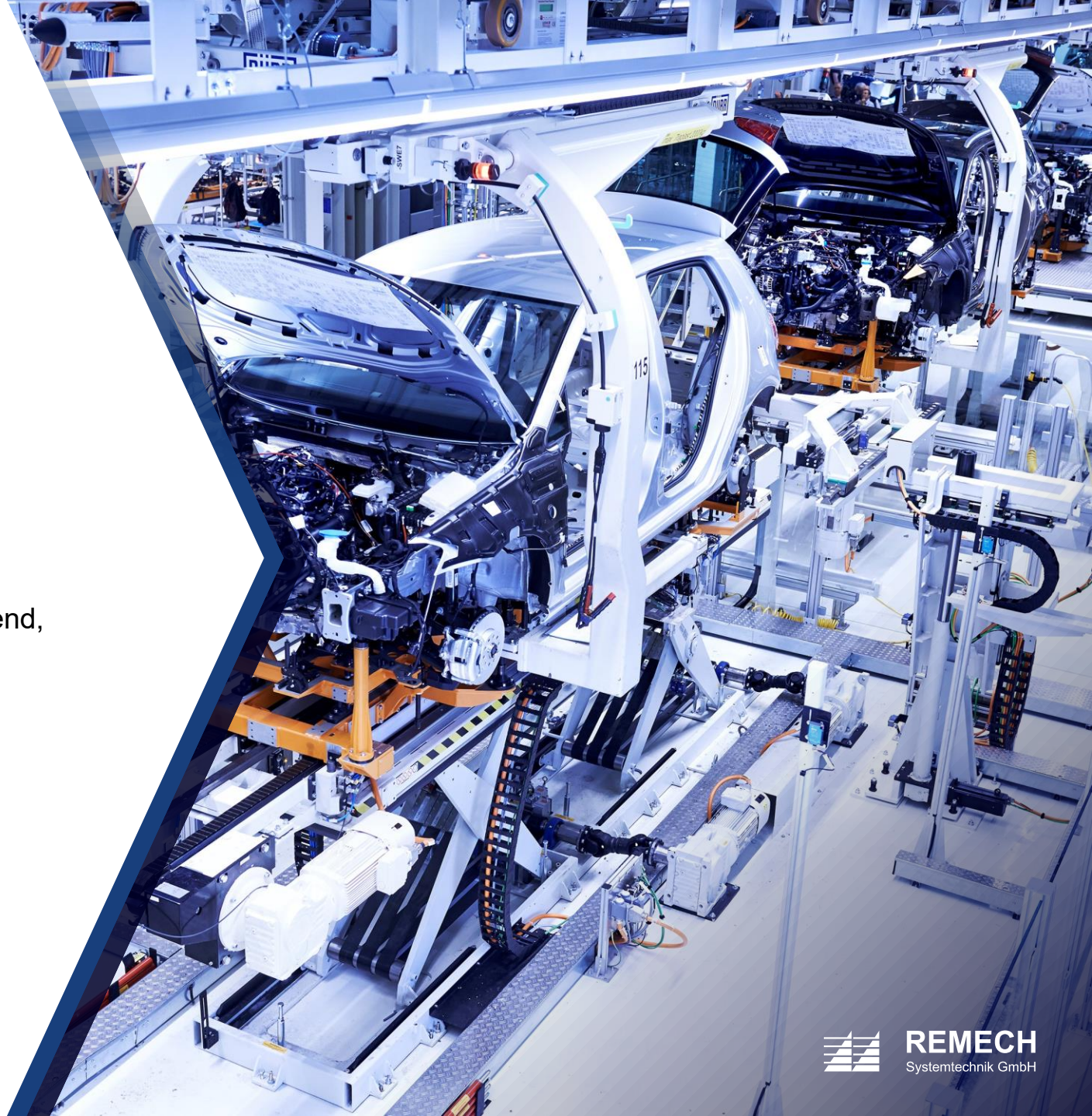
We develop complete solutions for production systems in final assembly

Precision, flexibility  
and innovative solutions

REMECH designs and implements complex material-carrier systems and assembly systems. We develop individual solutions for the pre-assembly of modules such as cockpit, frontend, or chassis, the automated installation as well as joining and screwdriving in installation cycles.

You set the requirements, we realize your project.

[▶ Video](#)



## Final Assembly Cockpit & handling technology (Batterie, Cockpit)

We develop complete solutions for production systems in final assembly

Precision, flexibility

and innovative solutions

REMECH designs and implements complex fully and semi-automated handling devices.

These are used in cockpit and frontend assembly as well as in transferring and repositioning batteries, axles, and other components.

You set the requirements, we realize your project.

[▶ Video](#)



## Final Assembly — load Carrier Destacking

We develop complete solutions for production systems in final assembly

Precision, flexibility

and innovative solutions

With the (De-)Stacker we offer a solution for separating stacks of load carriers in various stack sizes. Load carriers up to the maximum common weight classes in automotive manufacturing can be loaded into the Destacker eingelegt werden. It destacks the load carriers fully automatically and feeds them into the process cell. After the component is removed in the cell, the Stacker the empty load carriers and the stack can be returned to the logistics process.

You set the requirements, we realize your project.

[▶ Video](#)



# Contact

## Management

### Jens Wolf

[jens.wolf@siemens.com](mailto:jens.wolf@siemens.com) | Phone: +49 174 1563448



## Sales Department

### Robert Stoll

[stoll.robert@siemens.com](mailto:stoll.robert@siemens.com) | Phone: +49 175 4835183



## Key Expert – Conveyor Technology

### Alexander Desor

[alexander.desor@siemens.com](mailto:alexander.desor@siemens.com) | Phone: +49 160 90635934



## Key Expert – Final Assembly

### Jens Müller

[mueller.mj.jens@siemens.com](mailto:mueller.mj.jens@siemens.com) | Phone: +49 175 9347609



## Key Expert – Body Construction

### Andre Thieme

[andre.thieme@siemens.com](mailto:andre.thieme@siemens.com) | Phone: +49 170 8569421



## Key Expert – Mechanics

### Kay Pöhlmann

[kay.poehlmann@siemens.com](mailto:kay.poehlmann@siemens.com) | Phone: +49 175 2230691



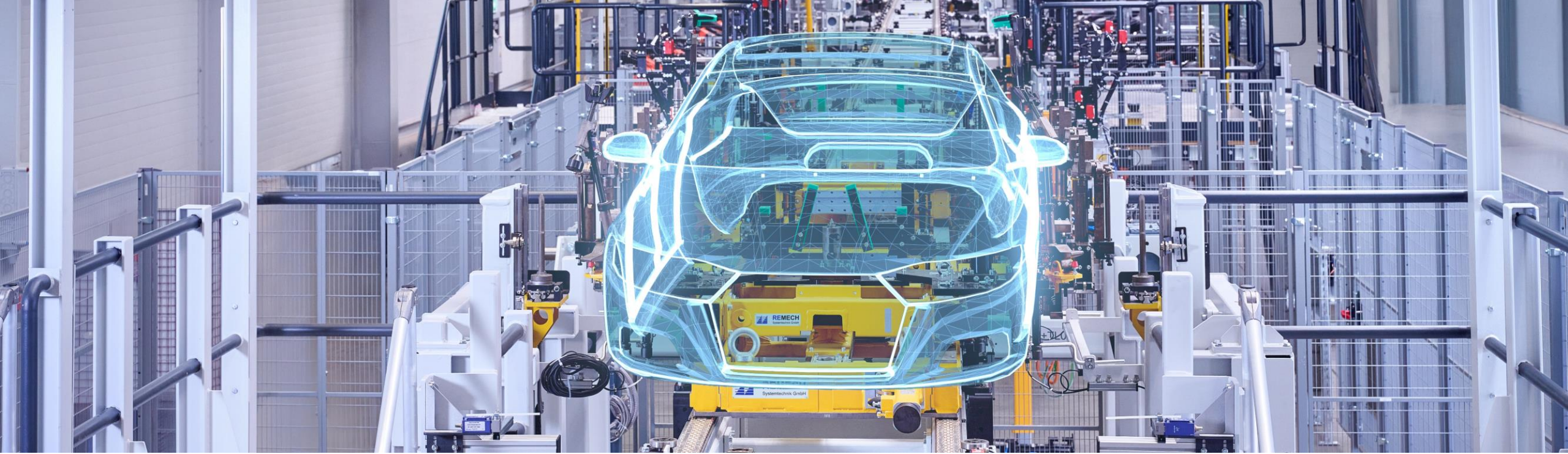
# Contact

## REMECH Systemtechnik GmbH

Werner-von-Siemens-Straße 1  
07333 Unterwellenborn  
Deutschland

Phone +49 3671 57 53 – 0  
Mail [info@remech.de](mailto:info@remech.de)  
Website [www.remech.de](http://www.remech.de)

[▶ Video](#)



# Thank you for your attention.

